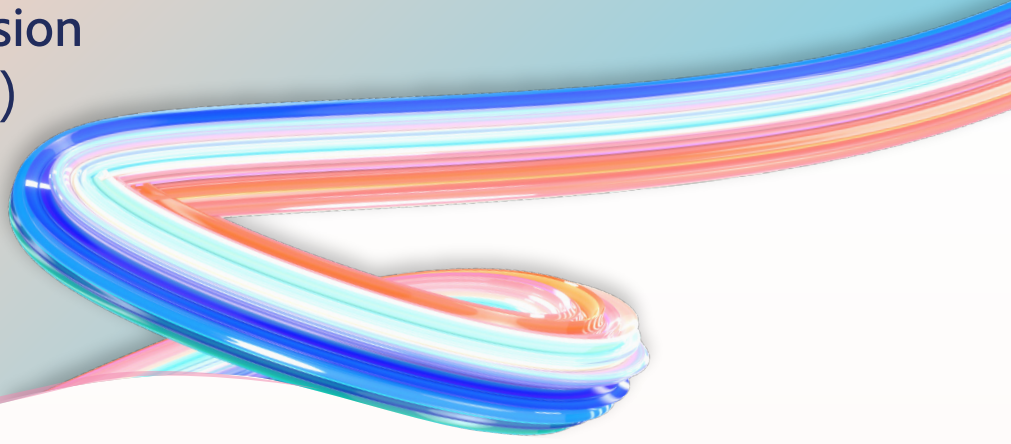




Adobe ColdFusion (2023 Release)

Enterprise



Windows

64-bit

- Windows Server 2022, Windows Server 2019, Windows Server 2016 (Datacenter, Standard, Essentials), Windows 10,11 (Home, Pro, Enterprise).
- 2 GB of available RAM for ColdFusion runtime and ColdFusion-related services. (Recommended: 4 GB).
- 4 GB of free hard-disk space for the installer and the temporary space for the installed image.

Linux

64-bit

- Red Hat Enterprise Linux 9.1 & later, SUSE Linux Enterprise Server 15.3 & later, Ubuntu 22 LTS.
- 2 GB of RAM for ColdFusion runtime and ColdFusion-related services. (Recommended: 4 GB)
- 4 GB of free hard-disk space for the installer and the temporary space for the installed image.

macOS

- macOS 13.x, mac ARM64, mac x64
- 2 GB of RAM for ColdFusion runtime and ColdFusion-related services. (Recommended: 4 GB)
- 4 GB of free hard-disk space for the installer and the temporary space for the installed image.

*For supported processors, refer the requirement specification for the respective Operating System.

Solaris

- Sun Solaris 11.4 for SPARC.
- 2 GB of RAM for ColdFusion runtime and ColdFusion-related services.
(Recommended: 4 GB)
- 4 GB of free hard-disk space for the installer and the temporary space for the installed image.