



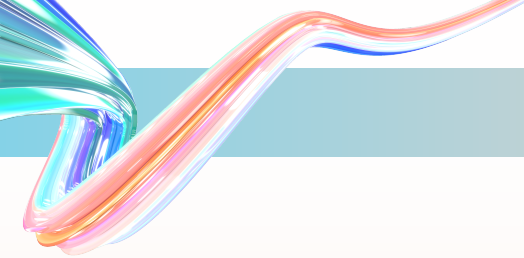
Adobe ColdFusion (2023 Release)

Windows 64-bit

| Operating System | Standard | Enterprise |
|--|-----------------|-------------------|
| Windows Server 2022 | ● | ● |
| Windows Server 2019 | ● | ● |
| Windows Server 2016 (Datacenter, Standard, Essentials) | ● | ● |
| Windows 10, 11 (Home, Pro, Enterprise) | ● | ● |
| JEE Application servers | Standard | Enterprise |
| WebLogic 14.1.1 & later | | ● |
| WebSphere 9.0.5.4 & later | | ● |
| Tomcat 9.0.72 & later | | ● |
| JBoss EAP 7.4 | | ● |
| WildFly 26.1.2 & later | | ● |
| JDK | Standard | Enterprise |
| JDK 17 | ● | ● |
| Web Servers | Standard | Enterprise |
| IIS 10 | ● | ● |
| Apache 2.4.56 & later | ● | ● |

macOS

| Operating System | Standard | Enterprise |
|-----------------------------------|----------|------------|
| macOS 13.x, mac ARM64, mac x64 | ● | ● |



| JDK | Standard | Enterprise |
|--------|----------|------------|
| JDK 17 | ● | ● |

Web Servers

| | Standard | Enterprise |
|-----------------------|----------|------------|
| Apache 2.4.56 & later | ● | ● |

Linux 64-bit

| Operating System | Standard | Enterprise |
|-------------------|----------|------------|
| RHEL 9.1 & later | ● | ● |
| Ubuntu 22 | ● | ● |
| SUSE 15.3 & later | ● | ● |

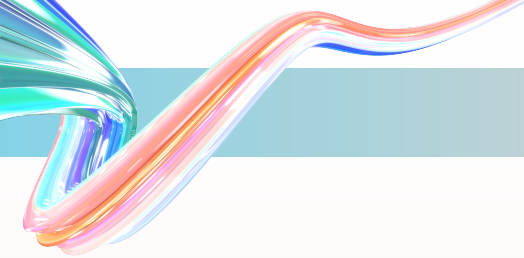
| JEE Application servers | Standard | Enterprise |
|---------------------------|----------|------------|
| WebLogic 14.1.1 & later | | ● |
| WebSphere 9.0.5.4 & later | | ● |
| Tomcat 9.0.72 & later | | ● |
| JBoss EAP 7.4 | | ● |
| WildFly 26.1.2 & later | | ● |

| JDK | Standard | Enterprise |
|--------|----------|------------|
| JDK 17 | ● | ● |

| Web Servers | Standard | Enterprise |
|-----------------------|----------|------------|
| Apache 2.4.56 & later | ● | ● |

Solaris 64-bit

| Operating System | Standard | Enterprise |
|------------------|----------|------------|
| Solaris 11.4 | | ● |



| JEE Application servers | Standard | Enterprise |
|---------------------------|----------|------------|
| WebLogic 14.1.1 & later | | ● |
| WebSphere 9.0.5.4 & later | | ● |
| Tomcat 9.0.72 & later | | ● |
| JBoss EAP 7.4 | | ● |
| WildFly 26.1.3 & later | | ● |
| JDK | Standard | Enterprise |
| JDK 11 | ● | ● |
| Web Servers | Standard | Enterprise |
| Apache 2.4.56 & later | ● | ● |

Databases supported

| Databases | Standard | Enterprise |
|--|----------|------------|
| Apache Derby 10.11 | ● | ● |
| MS SQL Server 2019 and 2022 | ● | ● |
| MySQL 8 | ● | ● |
| MongoDB 4.2 | ● | ● |
| PostgreSQL 14 | ● | ● |
| IBM DB2 11.x | | ● |
| Oracle 19C | | ● |
| Note: We'll only certify and support Oracle LTS. | | |

AWS Cloud Database Support

| | Standard | Enterprise |
|-----------------------------|----------|------------|
| MS SQL 2019 | ● | ● |
| MySQL 8 | ● | ● |
| Oracle 19C | | ● |
| Amazon Aurora PostgreSQL 14 | ● | ● |
| Amazon Aurora MySQL 8 | ● | ● |



Azure Cloud Database Support

| | Standard | Enterprise |
|-----------------------|----------|------------|
| Azure SQL Database 12 | ● | ● |
| MySQL 8 | ● | ● |
| PostgreSQL 11 | ● | ● |

GCP Cloud Database Support

| Databases | Standard | Enterprise |
|-----------------|----------|------------|
| SQL Server 2019 | ● | ● |
| MySQL 8 | ● | ● |
| PostgreSQL 14 | ● | ● |