

## ColdFusion Enterprise (2025 Release)

## ColdFusion Standard (2025 Release)

### Windows 64-bit

#### Operating System

Windows Server 2022	•	•
Windows Server 2019	•	•
Windows Server 2016 (Datacenter, Standard, Essentials)	•	•
Windows 10,11 (Home, Pro, Enterprise)	•	•

#### JEE Application servers

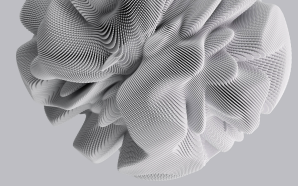
Tomcat 10.1.34	•	
JBoss EAP 8	•	
WildFly 35	•	

#### JDK

JDK21	•	•
-------	---	---

#### Web Servers

IIS 10	•	•
Apache 2.4.62 and later	•	•



## ColdFusion Enterprise (2025 Release)

## ColdFusion Standard (2025 Release)

### macOS

#### Operating System

macOS 15 ARM, macOS 15x64	•	•
---------------------------	---	---

#### JDK

JDK21	•	•
-------	---	---

#### Web Servers

Apache 2.4.62 and later	•	•
-------------------------	---	---

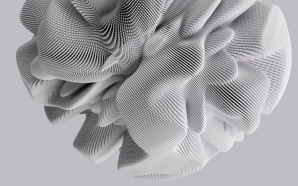
### Linux 64-bit

#### Operating System

RHEL 9.5 and later	•	•
Ubuntu 24 LTS	•	•
SUSE 15.5 and later	•	•

#### Web Servers

Apache 2.4.62 and later	•	•
-------------------------	---	---



## ColdFusion Enterprise (2025 Release)

## ColdFusion Standard (2025 Release)

### JEE Application servers

Tomcat 10.1.34	•	
JBoss EAP 8	•	
WildFly 35	•	

### JDK

JDK21	•	•
-------	---	---

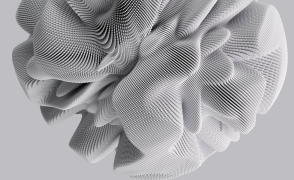
## Databases supported

### Databases

Apache Derby 10.16	•	•
MS SQL Server v2019 and v2022	•	•
MySQL 8.0.x	•	•
PostgreSQL 16.3	•	
Oracle 19C	•	

### AWS Cloud Database Support

MS SQL 2019	•	•
MySQL 8.0.x	•	•



## ColdFusion Enterprise (2025 Release)

## ColdFusion Standard (2025 Release)

Oracle 19C	•	
PostgreSQL 16.3	•	•
Amazon Aurora MySQL 8	•	•
Amazon Aurora Postgres 14.4	•	•

## Azure Cloud Database Support

Azure SQL Database 12.0.200	•	•
MySQL 8.0.x	•	•
PostgreSQL 11 *	•	•

## GCP services supported

### Databases

MS SQL 2022	•	•
MySQL 8.0.x	•	•
PostgreSQL 15	•	•

\*: If a newer version is available, support for this version will be dropped. The newer version will be supported.

\*\*\*: If a newer version is available, support for this version will be dropped. The newer version will be supported.